

**RAINWATER HARVESTING MEASURES**

Five Rainwater Harvesting Pits have been constructed in the Mine area. The surface rain fall water is being collected in the pits, which are acting as artificial ground water recharge structures to augment ground water extracted from the Bore wells. Fencing has been done all around the periphery of the pit to prevent trespassing.

**DIMENSIONS OF RAINWATER HARVESTING PIT**

S.NO.	DIMENSIONS L X B X H	VOLUME	Location
01.	24 m x 14 m x 4 m	1344 m <sup>3</sup>	Near Mine office
02.	22 m x 17 m x 4 m	1496 m <sup>3</sup>	Near Fixed crusher point
03.	20 m x 20 m x 4.5 m	1800 m <sup>3</sup>	Near ROM Stock yard
04.	12 m x 8 m x 4 m	384 m <sup>3</sup>	At point C
04.	22 m X 14 m X 2.5 m	770 m <sup>3</sup>	Near hill area point 4 (point A)
Total Volume		<b>5794 m<sup>3</sup></b>	~ 6000 m <sup>3</sup>

**1. Rainwater Harvesting Pit - 1 (Near Mine office - Canteen)****2. Rain Water Harvesting Pit - 2 (Near Fixed Crusher point)**

*[Handwritten signature]*



**3. Rain Water Harvesting Pit - 3 (Near ROM stock yard)**



**4. Rain Water Harvesting Pit - 4 (at Point C)**



**5. Rain Water Harvesting Pit - 5 (Near point - 4 hill area)**

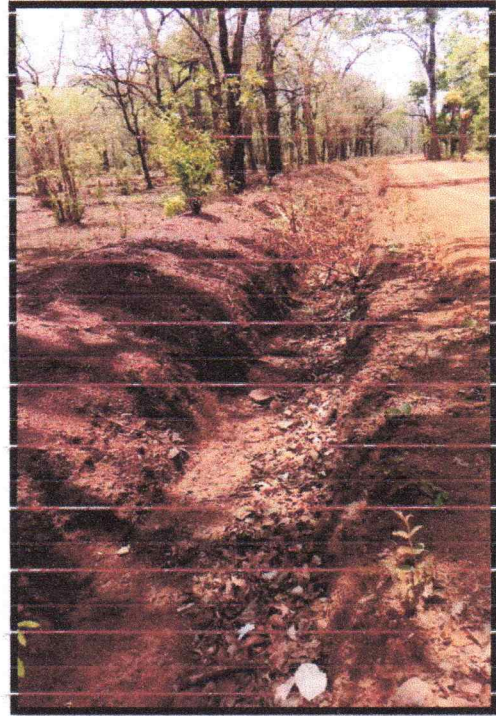
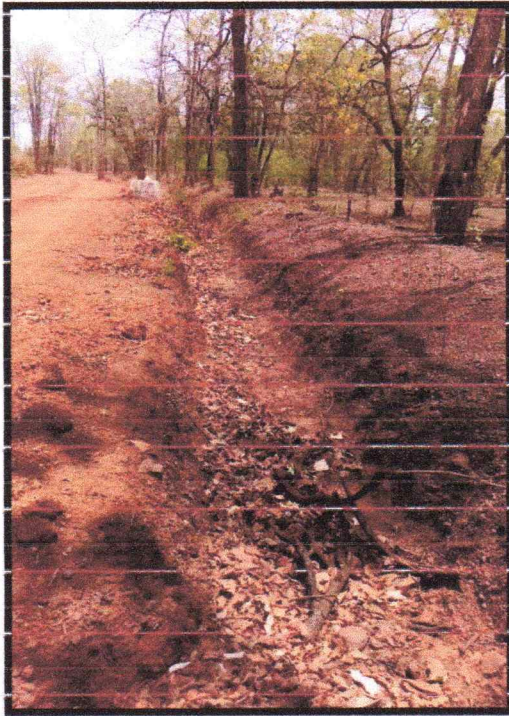


*[Handwritten signature]*



Apart from it Garland Drains and check dam are also constructed at desired locations.

**GARLAND DRAINS**



*Wof*